

**4200 PINE**

DISTINCTIVE LIVING IN UNIVERSITY CITY

**Trumbauer Mansion  
First Floor Plan**

**Unit 108 - 7,643 sq ft**  
**5 Bedrooms / 3 Bathrooms + 2 Half Bathrooms**  
**Four Floors - Courtyard View / Private Terrace**

Developer:

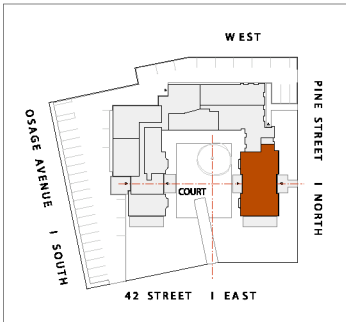
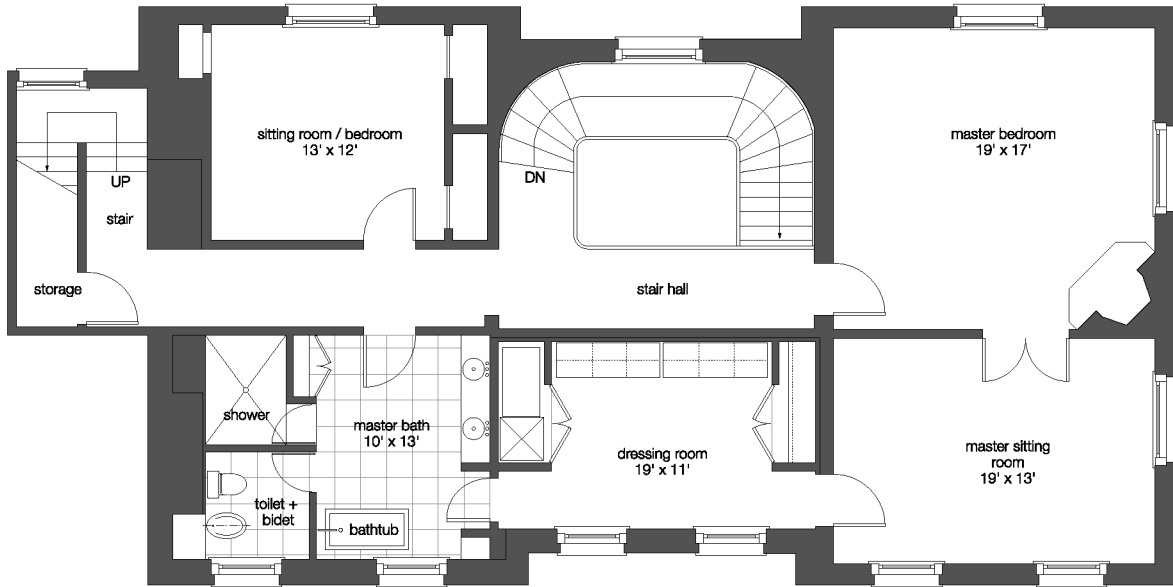


Selling Agent:

Jeff "City" Block  
Associate Broker



210 W. Rittenhouse Square, Suite 406  
 Philadelphia, PA 19103  
 Direct: (215) 790 5662  
 Main: (215) 546 0550  
 Fax: (215) 893 3018  
 Email: info@4200pine.com



**4200 PINE**

DISTINCTIVE LIVING IN UNIVERSITY CITY

**Trumbauer Mansion  
Second Floor Plan**

**Unit 108 - 7,643 sq ft**  
**5 Bedrooms / 3 Bathrooms + 2 Half Bathrooms**  
**Four Floors - Courtyard View / Private Terrace**

Developer:

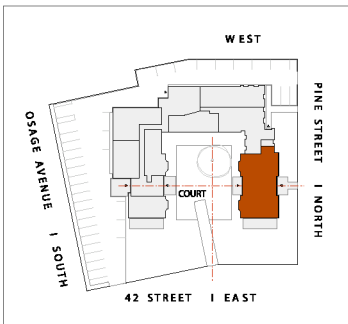
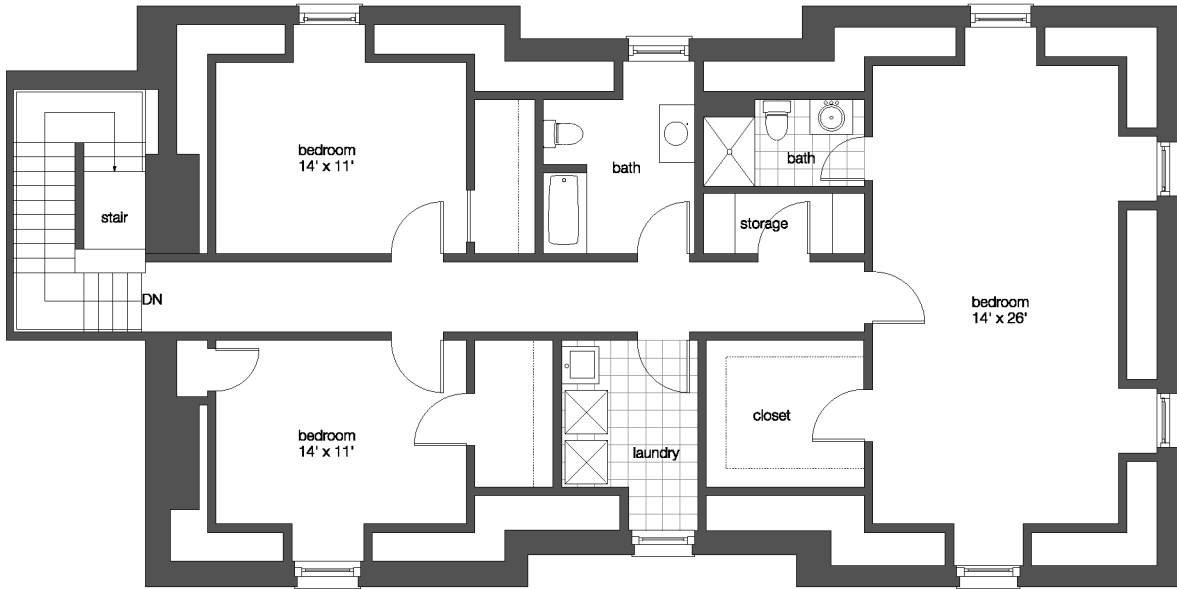


Selling Agent:

Jeff "City" Block  
Associate Broker



210 W. Rittenhouse Square, Suite 406  
 Philadelphia, PA 19103  
 Direct: (215) 790 5662  
 Main: (215) 546 0550  
 Fax: (215) 893 3018  
 Email: info@4200pine.com



**4200 PINE**

DISTINCTIVE LIVING IN UNIVERSITY CITY

**Trumbauer Mansion  
Third Floor Plan**

**Unit 108 - 7,643 sq ft**  
**5 Bedrooms / 3 Bathrooms + 2 Half Bathrooms**  
**Four Floors - Courtyard View / Private Terrace**

Developer:

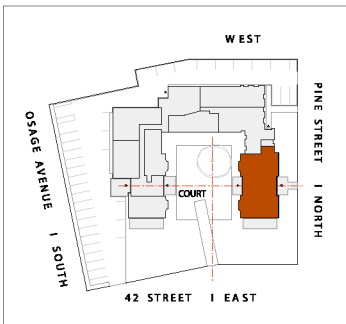
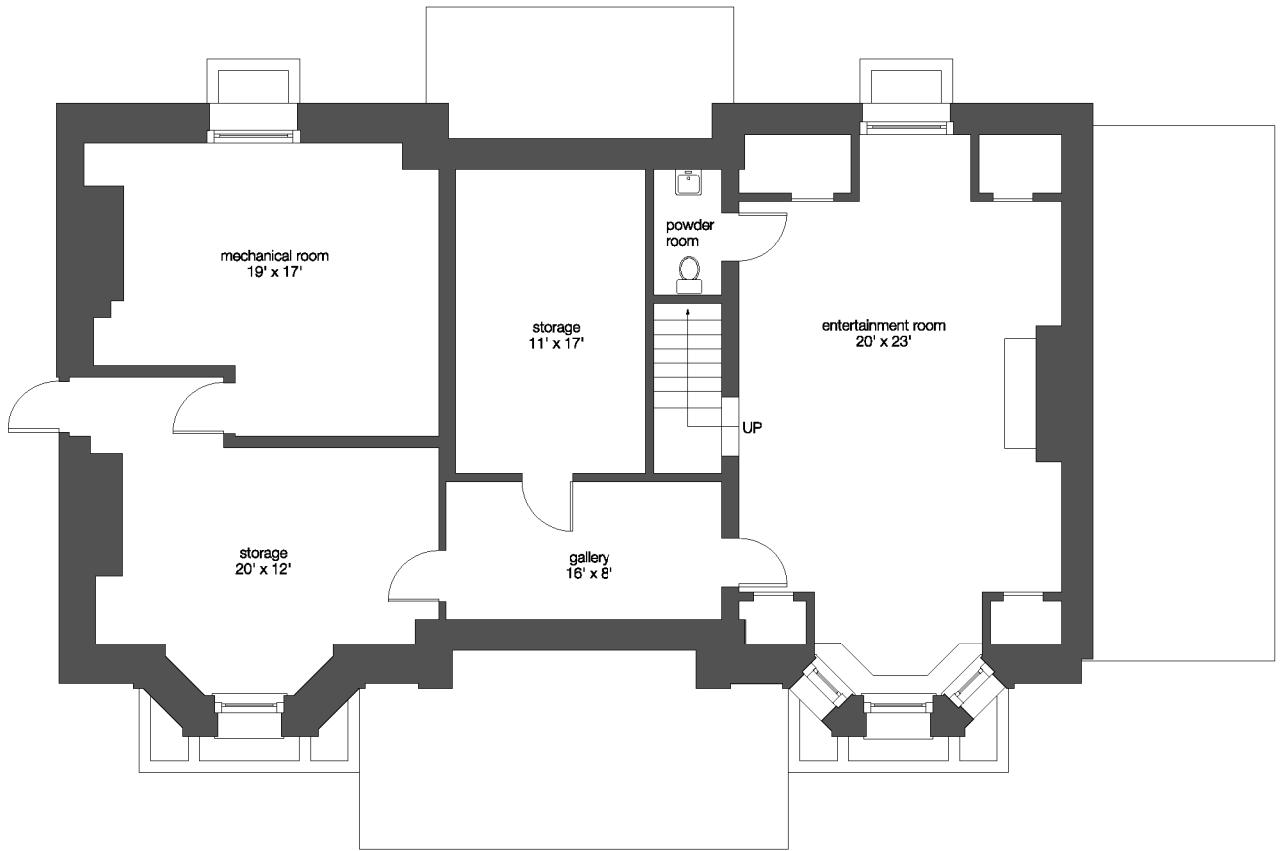


Selling Agent:

Jeff "City" Block  
Associate Broker



210 W. Rittenhouse Square, Suite 406  
 Philadelphia, PA 19103  
 Direct: (215) 790 5662  
 Main: (215) 546 0550  
 Fax: (215) 893 3018  
 Email: info@4200pine.com



**4200 PINE**

DISTINCTIVE LIVING IN UNIVERSITY CITY

**Trumbauer Mansion  
Basement Floor Plan**

**Unit 108 - 7,643 sq ft**  
**5 Bedrooms / 3 Bathrooms + 2 Half Bathrooms**  
**Four Floors - Courtyard View / Private Terrace**

Developer:



Selling Agent:

Jeff "City" Block  
Associate Broker



210 W. Rittenhouse Square, Suite 406  
 Philadelphia, PA 19103  
 Direct: (215) 790 5662  
 Main: (215) 546 0550  
 Fax: (215) 893 3018  
 Email: info@4200pine.com